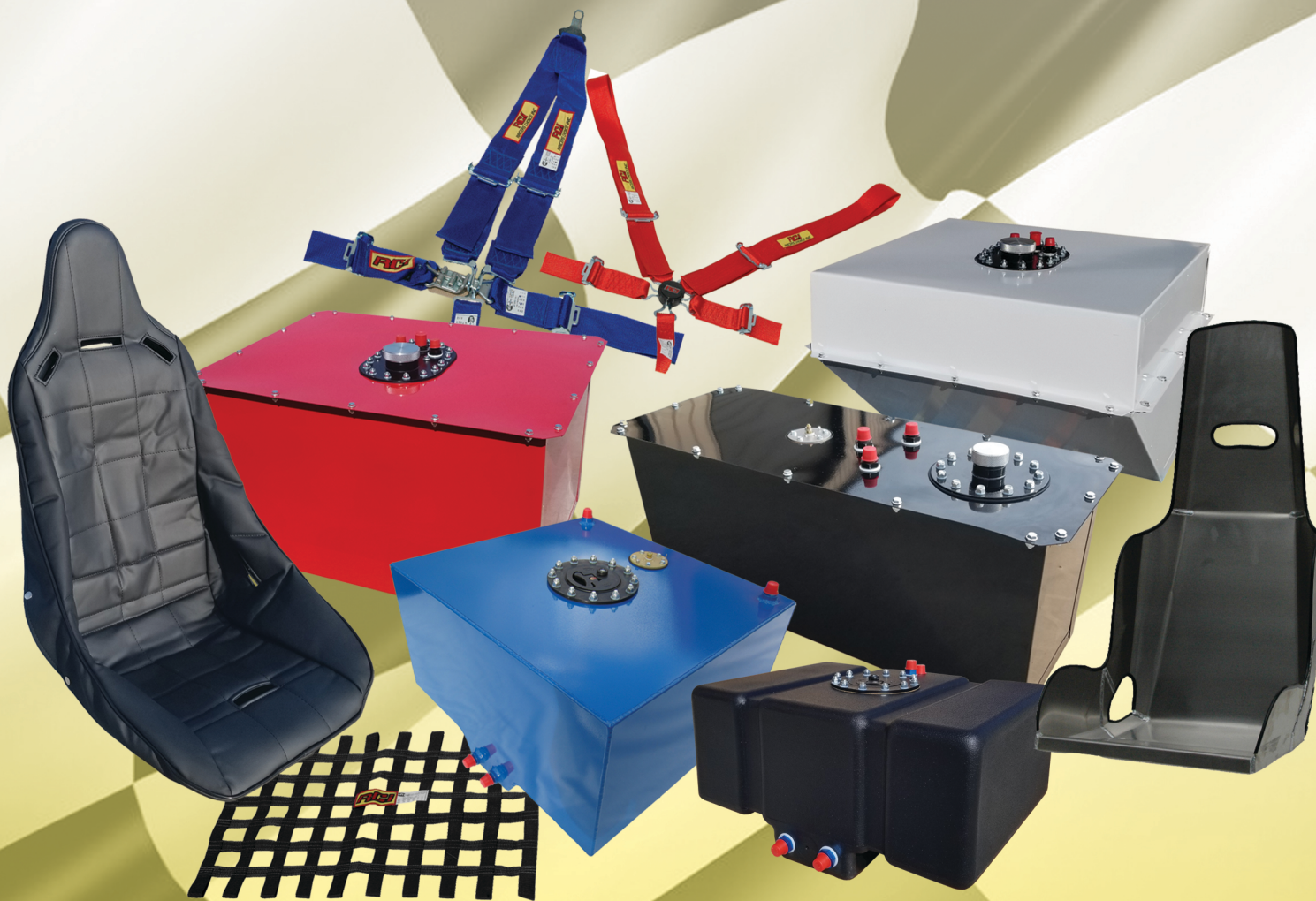


RACER'S CHOICE INC.

RCI[®]

PRODUCT CATALOG



13960 State Hwy 64 West
Tyler, Texas 75704
903-939-1908
www.rciracing.com

RCI® Seats & Covers

Racing / Street Rod / Off Road / Jeep / Truck

Poly seats with 18 degree layback are strong with lightweight double-wall construction. Fixed mounts are included and installed on all poly seats. Poly seats have three cutouts for all styles of restraints. High quality Vinyl covers are available in black only. Aluminum seats are tig-welded 5052 aluminum with 18 degree layback.



SEATS & SEAT COVERS

TYPE	WIDTH	HEIGHT	WEIGHT	SEAT	COVER
Poly Hi Back	20	33	10	8000S	8001S
Poly Lo Back	20	27	9	8020S	8021S
Aluminum Hi Back	17	34	9	8440S	8443S



SFI 4.1



SFI 7.2



SFI 7.2



APPROVED



APPROVED

BLANKETS & DIAPERS

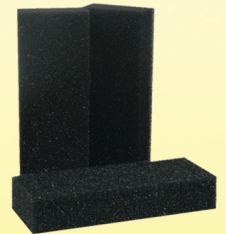
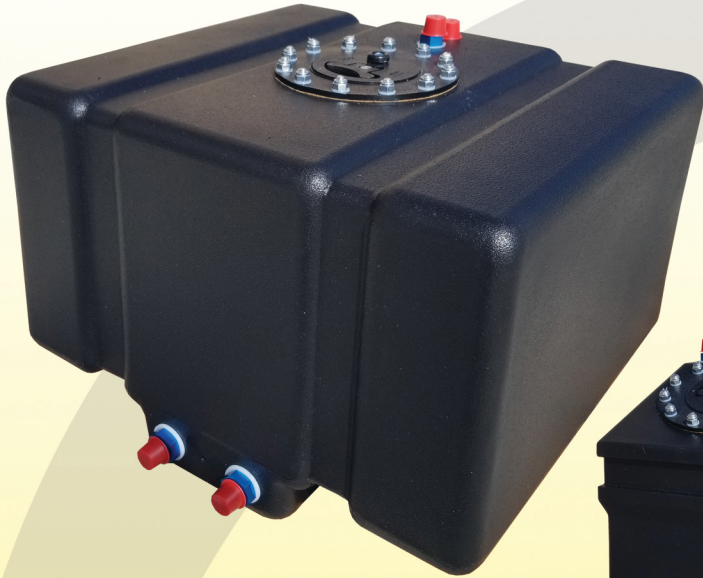
TYPE	PART	REPLACEMENT PAD
UNIVERSAL TRANS BLANKET	7808A	NONE
V8 Sportsman Engine Diaper	7809A	7809B
Sport Compact Engine Diaper	7811A	7811B

www.rciracing.com

Drag Race Cells **RCI**[®]

Professional Racing / Pro Street

12 Bolt heavy duty, aircraft style, lever lock, flush mount lid assembly.
0-90 ohm sending unit included with pro street cells.



Flush Mount Fill Cap
Two #8 Fuel Pickups on Sump
#8 Fuel Return
#8 Rollover Vent

SAFETY FOAM
3 x 6 x 16
1 STICK 7050A

SIZE	L	W	H	SENDING	FOAM	NO FOAM	STRAPS
1 Gallon	7	7	8	NO	2010D	1010D	NO
4 Gallon	9	10	17	NO	2040D	1040D	7404A
5 Gallon	13	13	8	NO	2050D	1050D	7405A
8 Gallon	15	20	8	NO	2080D	1080D	7408A
12 Gallon	16	17.5	10	NO	2120D	1120D	7412A
12 Gallon	16	17.5	10	0-90	NO	1120DS	7412A
16 Gallon	17	25	9	NO	2160D	1160D	7416A
16 Gallon	17	25	9	0-90	NO	1160DS	7416A

PRO-STREET FLAT BOTTOM

Flush Mount Fill Cap
#8 Fuel Pickup
#8 Fuel Return
#8 Rollover Vent



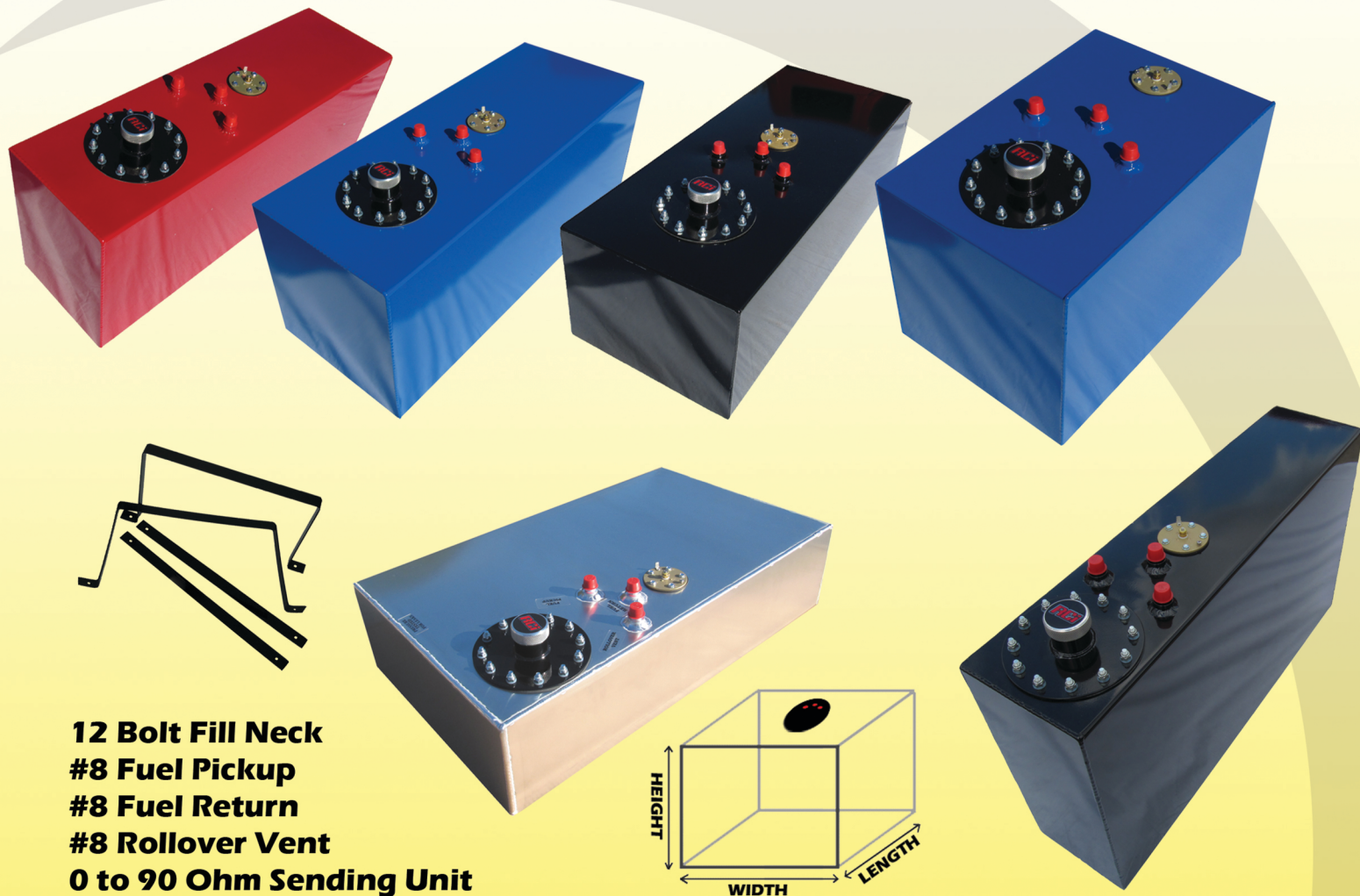
SIZE	L	W	H	SENDING	FOAM	NO FOAM	STRAPS
12 Gallon	16	17.5	10	0-90	NO	1120S	7412A
16 Gallon	17	25	9	0-90	NO	1160S	7416A

903-939-1908

RCi[®] Aluminum Cells

Street Rod / Street / Truck

Tig-welded 5052 strong, lightweight, aircraft aluminum alloy.
 12 bolt heavy duty remote fill neck for standard 1 3/4 hose.
 Natural aluminum color, or powdercoated red, blue, or black.
 Billet aluminum cap included for non-remote use.



12 Bolt Fill Neck
#8 Fuel Pickup
#8 Fuel Return
#8 Rollover Vent
0 to 90 Ohm Sending Unit

SIZE	L	W	H	NATURAL	RED	BLUE	BLACK	STRAPS
12 Gallon	18	12	12	2121A	2121AB	2121AC	2121AD	7511A
15 Gallon	30	09	12	2161A	2161AB	2161AC	2161AD	7512A
15 Gallon	30	12	09	2162A	2162AB	2162AC	2162AD	7513A
17 Gallon	30	07	17	2171A	2171AB	2171AC	2171AD	7514A
17 Gallon	30	17	07	2172A	2172AB	2172AC	2172AD	7515A
19 Gallon	30	12	12	2191A	2191AB	2191AC	2191AD	7516A



www.rciracing.com

Aluminum Cells **RCI**[®]

Racing Cells / Pro Street / Off Road

Tig-welded 5052 strong, lightweight, aircraft aluminum alloy.
 12 bolt heavy duty aircraft-style flush mount lid assembly
 Natural aluminum color, or powdercoated red, blue, or black.



Includes Safety Foam
Flush Mount Fill Cap
Two #8 Fuel Pickups on Sump
#8 Fuel Return
#8 Rollover Vent

SIZE	L	W	H	SENDING UNIT	NATURAL	RED	BLUE	BLACK	STRAPS
1 Gallon	07	06	08	NO	2010A	2010AB	2010AC	2010AD	NO
3 Gallon	08	08	15	NO	2030A	2030AB	2030AC	2030AD	7502A
4 Gallon	10	12	08	NO	2040A	2040AB	2040AC	2040AD	7503A
5 Gallon	12	12	08	NO	2050A	2050AB	2050AC	2050AD	7504A
10 Gallon	17	17	09	NO	2100A	2100AB	2100AC	2100AD	7505A
10 Gallon	17	17	09	0-90	2100AS	2100ABS	2100ACS	2100ADS	7505A
15 Gallon	18	20	10	NO	2150A	2150AB	2150AC	2150AD	7506A
15 Gallon	18	20	10	0-90	2150AS	2150ABS	2150ACS	2150ADS	7506A
20 Gallon	24	20	10	NO	2200A	2200AB	2200AC	2200AD	7509A
20 Gallon	24	20	10	0-90	2200AS	2200ABS	2200ACS	2200ADS	7509A



Flush Mount Fill Cap
Two #8 Fuel Pickups
#8 Fuel Return
#8 Rollover Vent



PRO STREET / FLAT BOTTOM

SIZE	L	W	H	SENDING UNIT	FOAM NATURAL	RED	BLUE	BLACK	STRAPS	
15 Gallon	18	20	10	0-90	NO	2151AS	2151ABS	2151ACS	2151ADS	7508A
20 Gallon	24	20	10	0-90	NO	2201AS	2201ABS	2201ACS	2201ADS	7510A

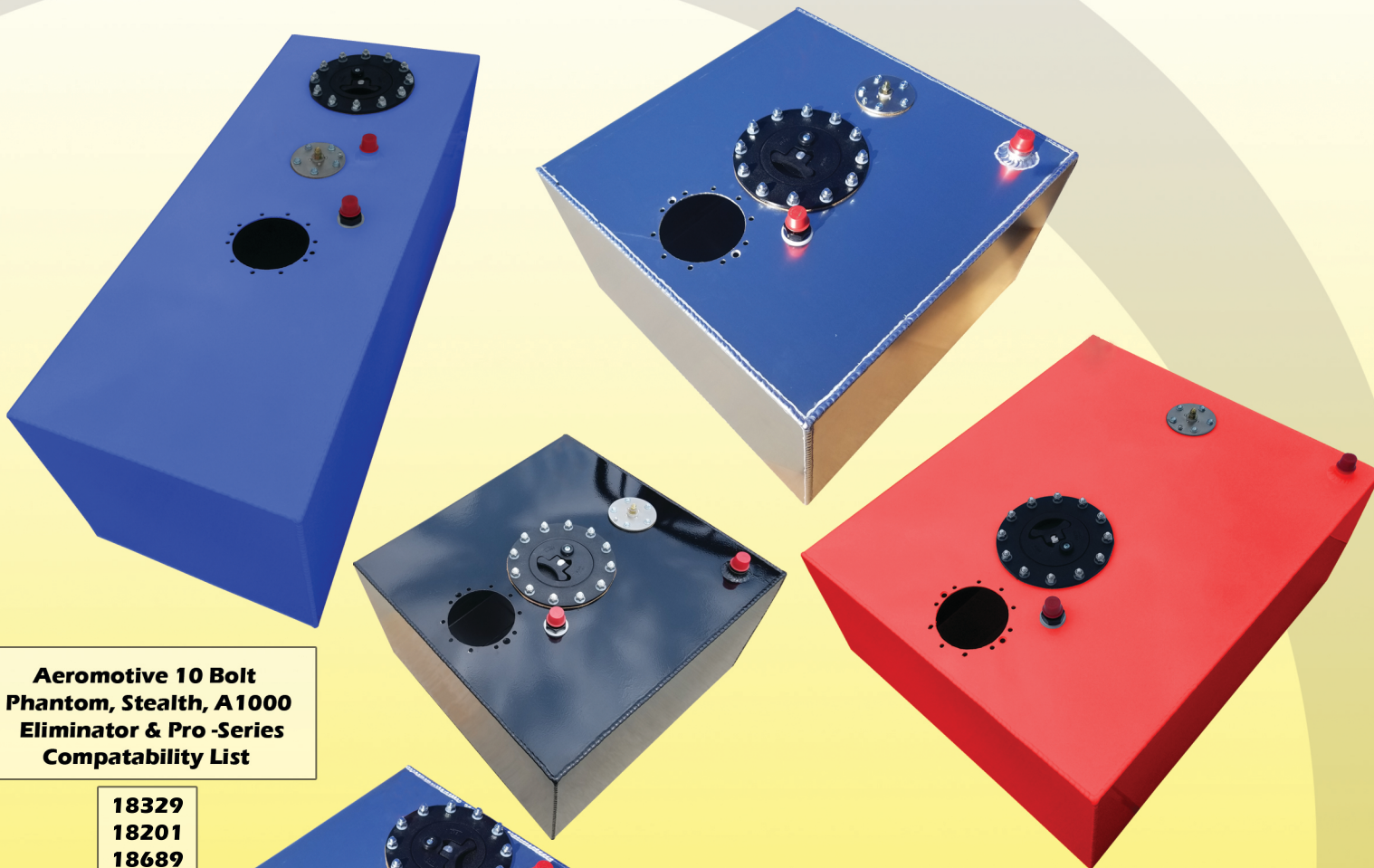
903-939-1908



EFI In-Tank Pump-Ready Aluminum Cells for Aeromotive 10 Bolt Pump Modules

Street Rod / Street / Truck / Racing Cells / Pro Street / Off Road

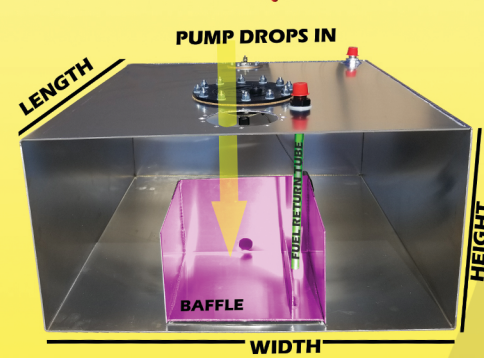
Tig-welded 5052 strong, lightweight, aircraft aluminum alloy.
 12 bolt heavy duty aircraft-style flush mount lid assembly
 Natural aluminum color, or powdercoated red, blue, or black.



Aeromotive 10 Bolt Phantom, Stealth, A1000 Eliminator & Pro-Series Compatability List

- 18329
- 18201
- 18689
- 18688
- 18310
- 18309
- 18005
- 18669
- 18668
- 18011
- 18003

**Flush Mount Fill Cap
 #8 Fuel Return
 #8 Rollover Vent**



PUMP READY - AEROMOTIVE

SIZE	L	W	H	SENDING UNIT	NATURAL	RED	BLUE	BLACK	STRAPS
6 Gallon	12	12	10	NO	2060Z	2060ZB	2060ZC	2060ZD	7517A
12 Gallon	17	17	10	0-90	2120ZS	2120ZBS	2120ZCS	2120ZDS	7519A
15 Gallon	18	20	10	0-90	2150ZS	2150ZBS	2150ZCS	2150ZDS	7506A
15 Gallon	30	12	10	0-90	2160ZS	2160ZBS	2160ZCS	2160ZDS	7520A
20 Gallon	24	20	10	0-90	2200ZS	2200ZBS	2200ZCS	2200ZDS	7509A

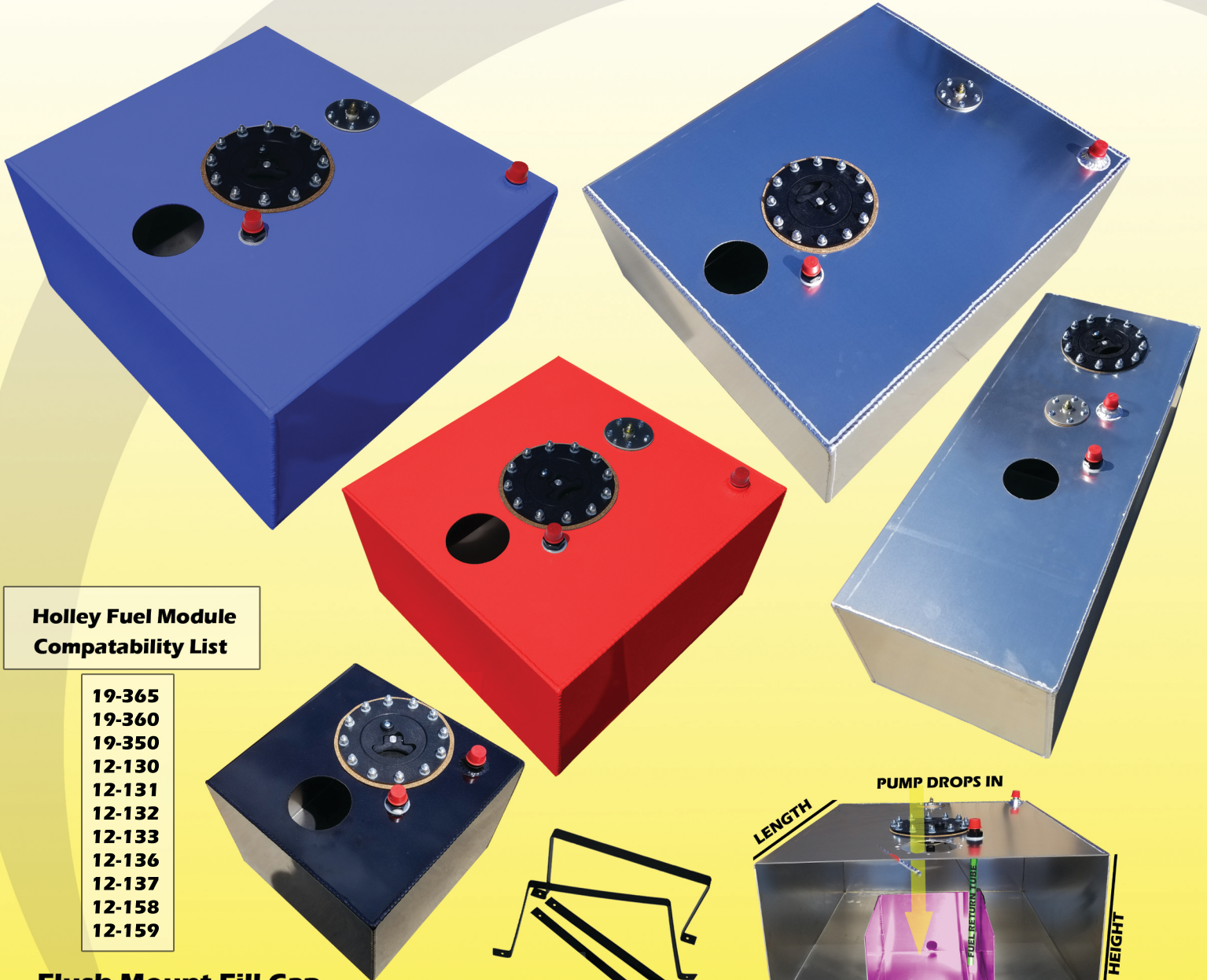
www.rciracing.com

EFI In-Tank Pump-Ready Aluminum Cells for Holley Retro-Fit Modules



Street Rod / Street / Truck / Racing Cells / Pro Street / Off Road

Tig-welded 5052 strong, lightweight, aircraft aluminum alloy.
 12 bolt heavy duty aircraft-style flush mount lid assembly
 Natural aluminum color, or powdercoated red, blue, or black.



Holley Fuel Module Compatibility List

- 19-365
- 19-360
- 19-350
- 12-130
- 12-131
- 12-132
- 12-133
- 12-136
- 12-137
- 12-158
- 12-159

Flush Mount Fill Cap
 #8 Fuel Return
 #8 Rollover Vent

PUMP READY - HOLLEY

SIZE	L	W	H	SENDING UNIT	NATURAL	RED	BLUE	BLACK	STRAPS
6 Gallon	12	12	10	NO	2060H	2060HB	2060HC	2060HD	7517A
12 Gallon	17	17	10	0-90	2120HS	2120HBS	2120HCS	2120HDS	7519A
15 Gallon	18	20	10	0-90	2150HS	2150HBS	2150HCS	2150HDS	7506A
15 Gallon	30	12	10	0-90	2160HS	2160HBS	2160HCS	2160HDS	7520A
20 Gallon	24	20	10	0-90	2200HS	2200HBS	2200HCS	2200HDS	7509A

903-939-1908



EFI In-Tank Pump-Ready Aluminum Cells for Universal 16 Bolt Retrofit Modules

Street Rod / Street / Truck / Racing Cells / Pro Street / Off Road

Tig-welded 5052 strong, lightweight, aircraft aluminum alloy.
 12 bolt heavy duty aircraft-style flush mount lid assembly
 Natural aluminum color, or powdercoated red, blue, or black.



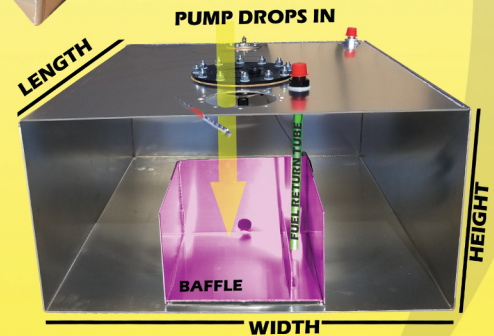
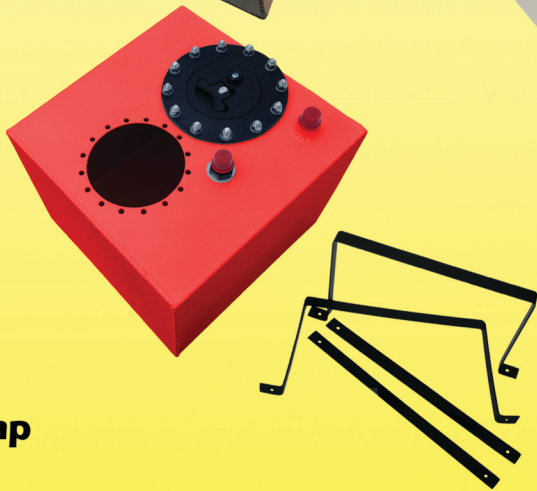
**Universal 16 Bolt
 Compatability List**

**Speedway Retrofit
 91140233**

**Summit Retrofit
 SUM-250151**

**Tanks Inc.
 PA Series**

**Flush Mount Fill Cap
 #8 Fuel Return
 #8 Rollover Vent**



PUMP READY - UNIVERSAL

SIZE	L	W	H	SENDING UNIT	NATURAL	RED	BLUE	BLACK	STRAPS
6 Gallon	13	11	10	NO	2060U	2060UB	2060UC	2060UD	7518A
12 Gallon	17	17	10	0-90	2120US	2120UBS	2120UCS	2120UDS	7519A
15 Gallon	18	20	10	0-90	2150US	2150UBS	2150UCS	2150UDS	7506A
15 Gallon	30	12	10	0-90	2160US	2160UBS	2160UCS	2160UDS	7520A
20 Gallon	24	20	10	0-90	2200US	2200UBS	2200UCS	2200UDS	7509A

www.rciracing.com

Universal Fuel Cell In-Tank Pump Hanger

Fits Most Fuel Pump Kits

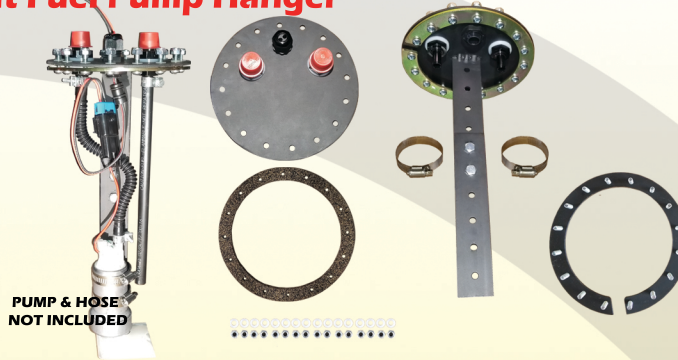


Street Rod / Street / Truck / Racing Cells / Pro Street / Off Road

Universal Round 16 Bolt Fuel Pump Hanger

7084A

- Adj. Pump Height 7" - 12"
- #8 Fuel Pickup to Pump
- #8 Fuel Return
- 16 Bolt Gasket
- 16 Bolt In-tank Stud Ring
- 2 Pump Retainer Clamps
- 16 Locknuts
- 16 Nylon Washers



PUMP & HOSE NOT INCLUDED

Fits all RCI EFI Universal in-tank pump-ready aluminum cells
Fits most all Universal Clamp-on Pumps

Circle-Track Oval 16 Bolt Fuel Cell Fill Plate with Pump Hanger

7082A

- Adj. Pump Height 7"-18"
- #8 Fuel Pickup to Pump
- #8 Fuel Return
- # 8 Rollover Vent
- 2 1/2 Standard Alum Cap
- 16 Bolt Gasket
- 16 Bolt In-tank Stud Ring
- 2 Pump Retainer Clamps
- 16 Locknuts
- 16 Nylon Washers
- Circle Track Under-Cap Flapper



PUMP & HOSE NOT INCLUDED

Fits all RCI Circle-Track Fuel Cells
Fits most all Universal Clamp-on Pumps

Standard Round 12 Bolt Fuel Cell Fill Plate with Pump Hanger

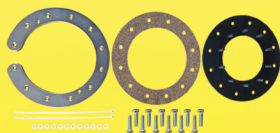
7080A

- Adj. Pump Height 7" - 12"
- #8 Fuel Pickup to Pump
- #8 Fuel Return
- 1 3/4 Standard Alum Cap
- 12 Bolt Gasket
- 12 Bolt In-tank Stud Ring
- 2 Pump Retainer Clamps
- 12 Locknuts
- 12 Nylon Washers

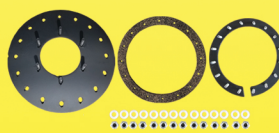


PUMP & HOSE NOT INCLUDED

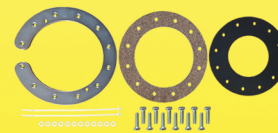
Fits all RCI Aluminum and Drag Fuel Cells
Fits most all Universal Clamp-on Pumps



Converts standard RCI 12 bolt round fuel cell fill plate pattern to 10 bolt Aeromotive pump pattern
Aeromotive Retrofit Kit
7085A



Converts RCI universal in-tank pump-ready aluminum fuel cell pump pattern to fit Tank Inc. 6 bolt GPA-Series, Holley Sniper 19-165 & 19-175 and Summit SUM-250150
Universal Retrofit Kit
7085U



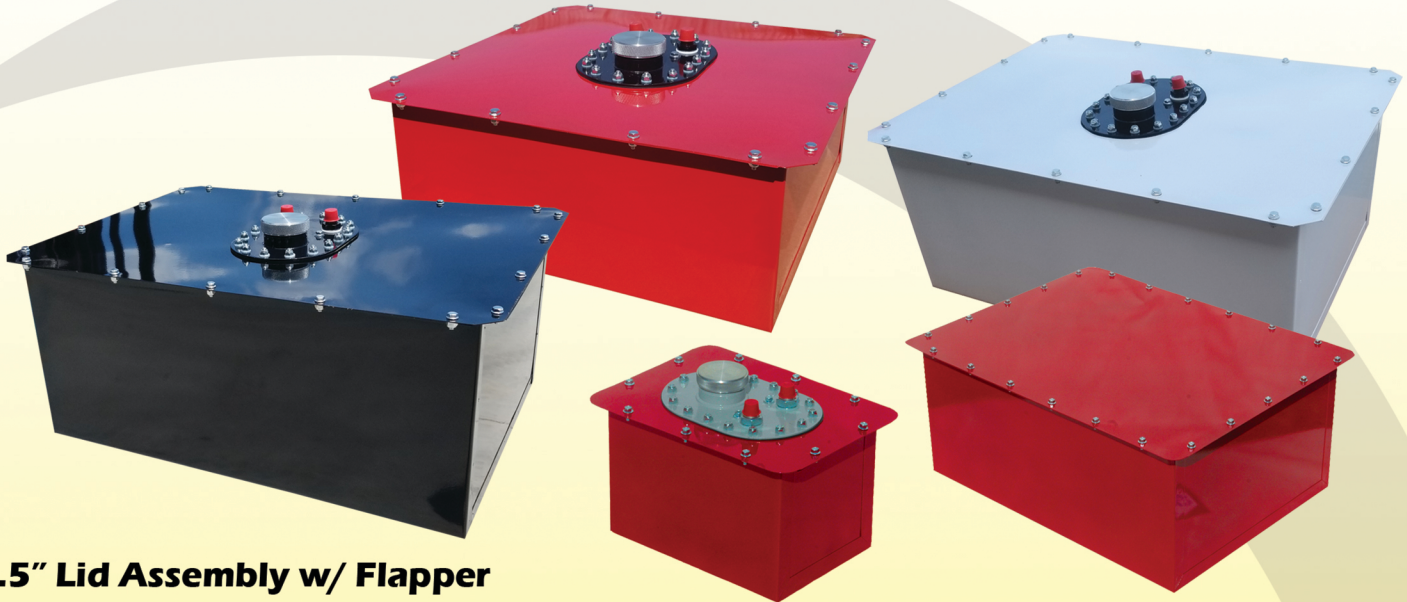
Converts standard RCI 12 bolt round fuel cell fill plate pattern to Holley Fuel Module pump pattern
Holley Retrofit Kit
7085H

www.rciracing.com

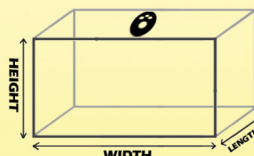
RCI[®] Circle Track Cells

Professional Racing / Bladders / Cans

Manufactured with cross-linked high strength polyethylene bladder
Steel cans are powdercoated red, black, or white.



**2.5" Lid Assembly w/ Flapper
Fuel Pickup Right Rear
All Steel Cans Spot Welded
#8 Rollover Vent**



C STYLE: SIDE TO SIDE



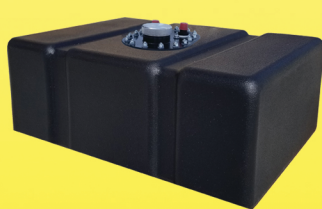
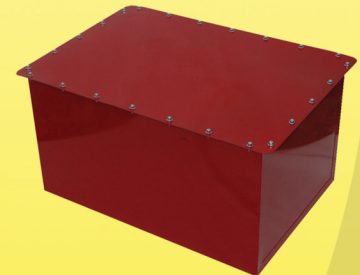
G STYLE: FRONT TO BACK

COMPLETE CELL

SIZE	L	W	H	PICKUP	STYLE	RED	BLACK	WHITE
3 Gallon	12.5	08	09	#8		1032C	1032CD	1032CW
8 Gallon	19	19	08	#8		1082C	1082CD	1082CW
12 Gallon	19	19	11	#8		1122C	1122CD	1122CW
16 Gallon	18.5	26	11.5	#8	SIDE TO SIDE	1162C	1162CD	1162CW
16 Gallon	26	18.5	11.5	#8	FRONT TO BACK	1162G	1162GD	1162GW
16 Gallon	18.5	26	11.5	#10	SIDE TO SIDE	1162C-10	1162CD-10	1162CW-10
16 Gallon	26	18.5	11.5	#10	FRONT TO BACK	1162G-10	1162GD-10	1162GW-10

CAN ONLY

SIZE	L	W	H	RED	BLACK	WHITE
8 Gallon	19	19	08	6108A	6108AD	6108AW
12 Gallon	19	19	11	6112A	6112AD	6112AW
16 Gallon	26	18.5	11.5	6116A	6116AD	6116AW



ECONO STREET STOCK CELLS

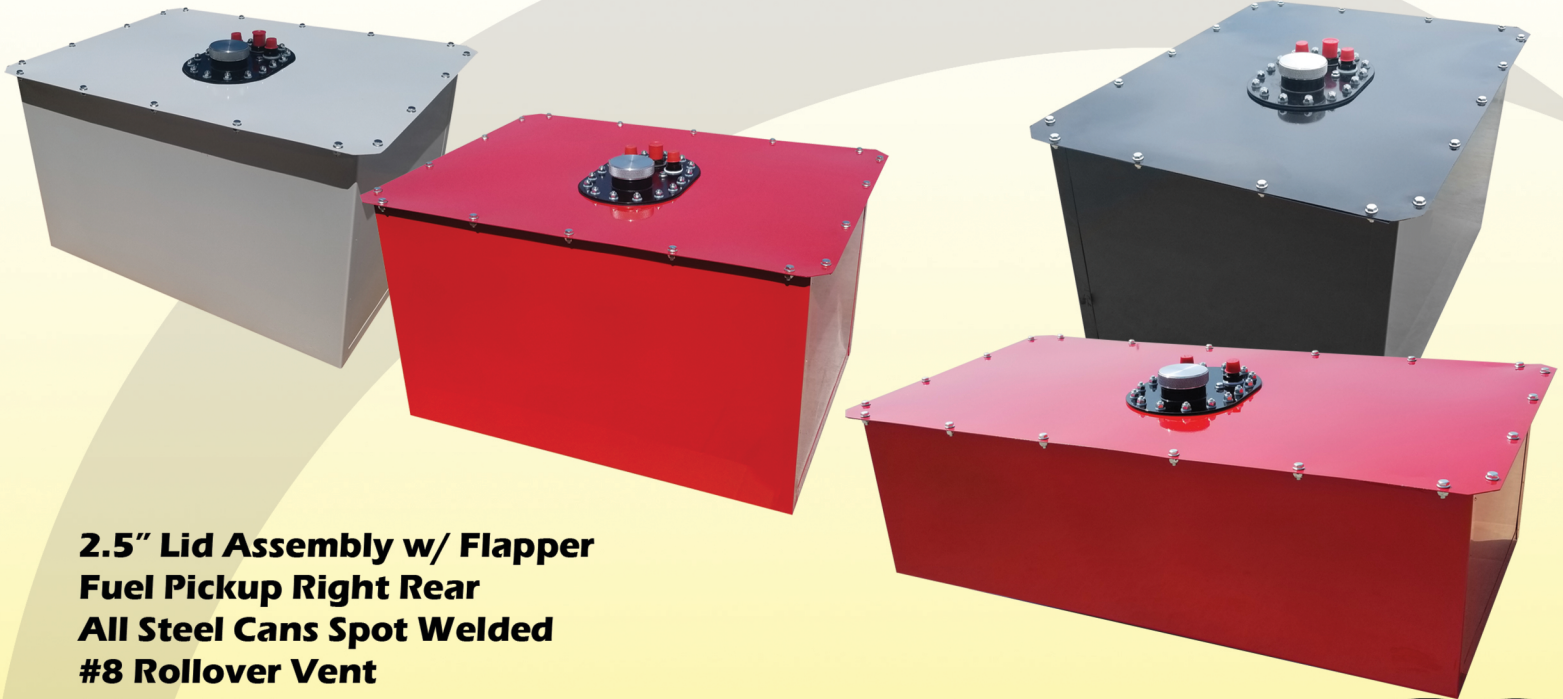
SIZE	L	W	H	PICKUP	PART
8 Gallon	15	20	7	#8	1081C
12 Gallon	16	17.5	9	#8	1121C
16 Gallon	17	25	8	#8	1161C

www.rciracing.com

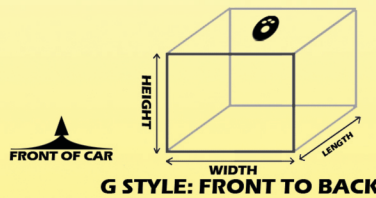
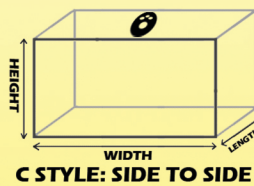
Circle Track Cells **RCI**[®]

Professional Racing / Bladders / Cans

Manufactured with cross-linked high strength polyethylene bladder
Steel cans are powdercoated red, black, or white.



2.5" Lid Assembly w/ Flapper
Fuel Pickup Right Rear
All Steel Cans Spot Welded
#8 Rollover Vent
#8 Fuel Return
#10 Fuel Pickup



APPROVED

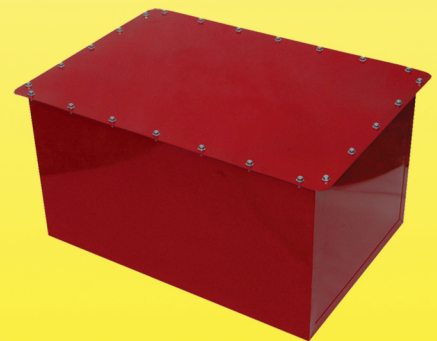
SFI Approved cells contain safety foam and are available in black color only

COMPLETE CELL

SIZE	L	W	H	STYLE	RED	BLACK	WHITE	SFI 28.3
22 Gallon	18.5	26	15.5	SIDE TO SIDE	1222C	1222CD	1222CW	1222CD-L
22 Gallon	26	18.5	15.5	FRONT TO BACK	1222G	1222GD	1222GW	1222GD-L
22 Gallon	18	34	11	SIDE TO SIDE	1212C	1212CD	1212CW	1212CD-L
26 Gallon	18.5	26	17	SIDE TO SIDE	1262C	1262CD	1262CW	1262CD-L
26 Gallon	26	18.5	17	FRONT TO BACK	1262G	1262GD	1262GW	1262GD-L
32 Gallon	18.5	26	18	SIDE TO SIDE	1322C	1322CD	1322CW	1322CD-L
32 Gallon	26	18.5	18	FRONT TO BACK	1322G	1322GD	1322GW	1322GD-L

CAN ONLY

SIZE	L	W	H	RED	BLACK	WHITE
22 Gallon	26	18.5	15.5	6122A	6122AD	6122AW
22 Gallon	18	34	11	6121A	6121AD	6121AW
26 Gallon	26	18.5	17	6126A	6126AD	6126AW
32 Gallon	26	18.5	18	6132A	6132AD	6132AW



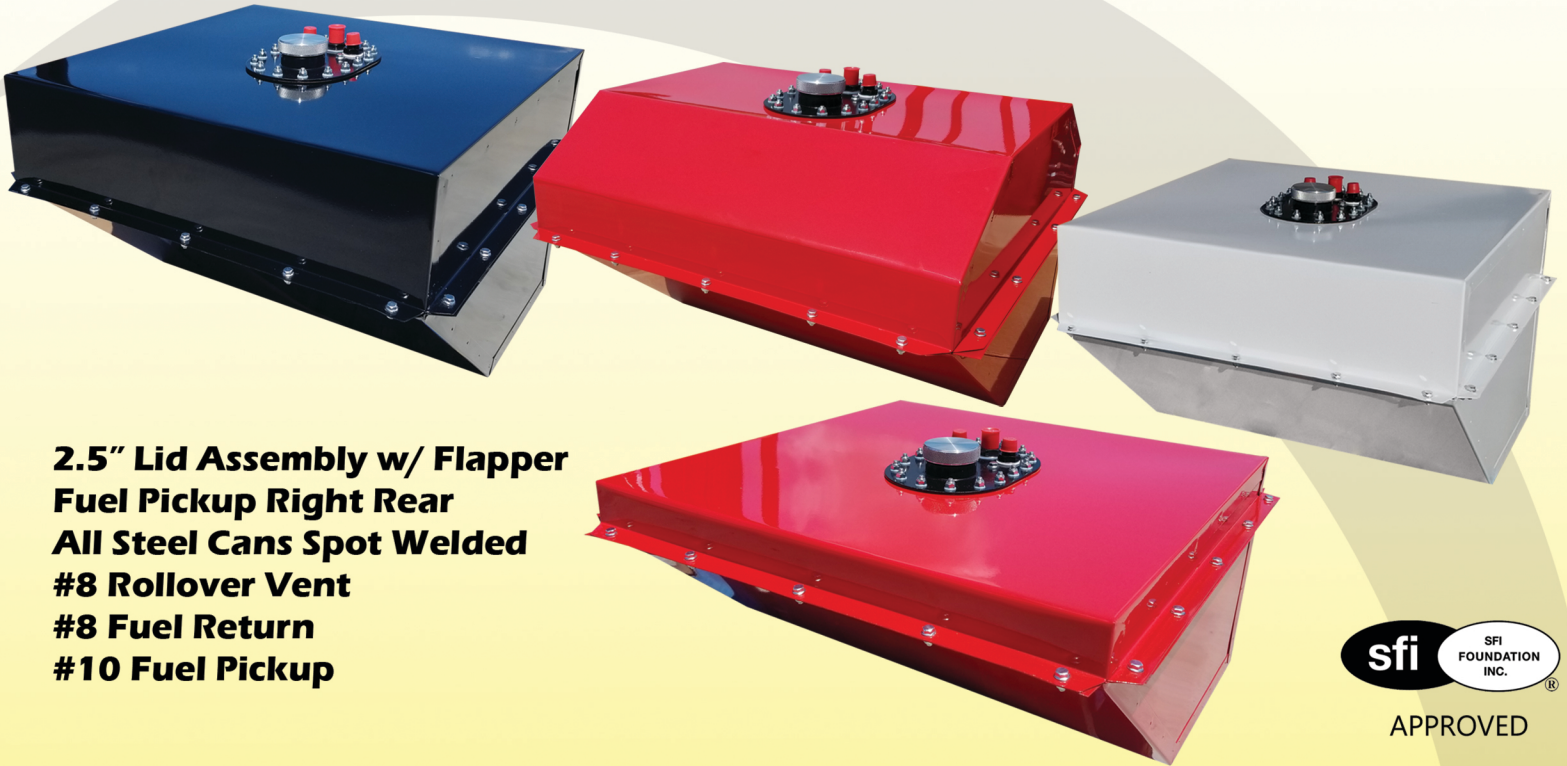
Replacement bladders available on request

903-939-1908

RCI[®] Circle Track Cells

Weight Transfer / Bladders / Cans

Weight transfer cells are manufactured with cross-linked high strength polyethylene bladder. Steel cans are powdercoated red, black, or white.



**2.5" Lid Assembly w/ Flapper
Fuel Pickup Right Rear
All Steel Cans Spot Welded
#8 Rollover Vent
#8 Fuel Return
#10 Fuel Pickup**



APPROVED

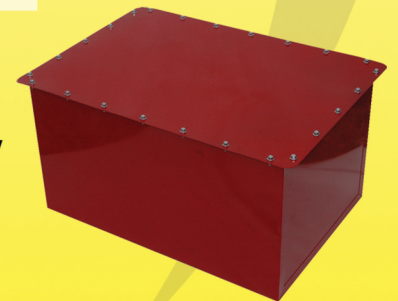
SFI Approved cells contain safety foam and are available in black color only

COMPLETE CELL

SIZE	L	W	H	STYLE	RED	BLACK	WHITE	SFI 28.3
16 Gallon	24.5	24.5	12	WEDGE	1162F	1162FD	1162FW	1162FD-L
18 Gallon	24.5	24.5	13	WEDGE	1182F	1182FD	1182FW	1182FD-L
22 Gallon	24.5	24.5	15	WEDGE	1222F	1222FD	1222FW	1222FD-L
22 Gallon	24.5	24.5	17	TEARDROP	1222H	1222HD	1222HW	1222HD-L
26 Gallon	24.5	24.5	17	WEDGE	1262F	1262FD	1262FW	1262FD-L
30 Gallon	24.5	24.5	18	WEDGE	1302Y	1302YD	1302YW	1302YD-L
32 Gallon	24.5	24.5	20	TEARDROP	1322DW	1322DWD	1322DWW	1322DWD-L

CAN ONLY

SIZE	L	W	H	STYLE	RED	BLACK	WHITE
16 Gallon	24.5	24.5	12	WEDGE	6116F	6116FD	6116FW
18 Gallon	24.5	24.5	13	WEDGE	6118F	6118FD	6118FW
22 Gallon	24.5	24.5	15	WEDGE	6122F	6122FD	6122FW
22 Gallon	24.5	24.5	17	TEARDROP	6122H	6122HD	6122HW
26 Gallon	24.5	24.5	17	WEDGE	6126F	6126FD	6126FW
30 Gallon	24.5	24.5	18	WEDGE	6130Y	6130YD	6130YW
32 Gallon	24.5	24.5	20	TEARDROP	6132DW	6132DWD	6132DWW



Replacement bladders available on request

www.rciracing.com

Specialty Cells

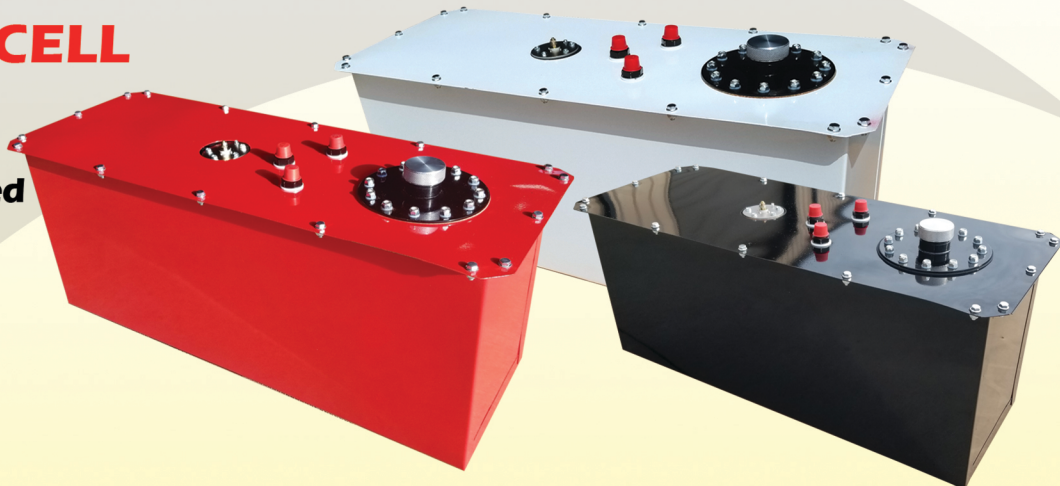
Off Road / Bladders / Cans / Accessories



Off Road cells are manufactured with cross-linked high strength polyethylene bladder. Steel cans are powdercoated red, black, or white.

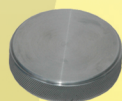
ROCK CRAWLER CELL

- All Steel Cans Spot Welded
- #8 Rollover Vent
- #8 Fuel Return
- #8 Fuel Pickup
- 0-90 Ohm Sending Unit
- Centered Fuel Pickup



COMPLETE CELL

SIZE	L	W	H	RED	BLACK	WHITE
12 Gallon	30	10	12.5	2121J	2121JD	2121JW
15 Gallon	30	10	14.5	2161J	2161JD	2161JW



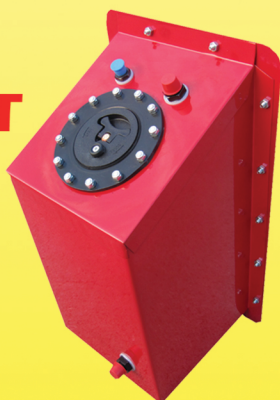
- 2 1/2" OVAL CAP ASSY**
 #8 PICKUP 7032A
 #10 PICKUP 7032B
 CAP ONLY 7032C
 16 BOLT GASKET 0111



- 45 DEGREE FAST FILL ASSY**
 #10 Pickup
 #8 Rollover
 #8 Return
 2 1/2" O.D. 7038A

MINI SPRINT

- All Steel Cans Spot Welded
- #8 Rollover Vent
- #8 Fuel Return
- #8 Fuel Pickup



- FITTINGS**
 #8 BOLT-IN ROLLOVER 7020A
 #8 IN-LINE ROLLOVER 7021A
 #8 to #10 IN-LINE ADAPTER 7022A
 #10 to #8 IN-LINE REDUCER 7023A
 #8 FEMALE to 3/8" BARB ADAPTER 7024A

COMPLETE CELL

SIZE	L	W	H	RED	BLACK	WHITE
4 Gallon	09	09	17	1042C	1042CD	1042CW

903-939-1908



Driver Restraints

SFI 16.1 Professional Racing / Jeep / Off Road

All belts include high quality extra long webbing with all mounting hardware for roll bar, floor mount, bolt-in, or wrap-around mounting. All latch & link and aircraft style quick release cam-lock systems are SFI 16.1 approved. 5-point belts have a choice of pull down or pull up lap belts.



TWO 72 INCH SHOULDERS

3" 5-POINT WRAP-AROUND or BOLT IN

SFI 16.1

COLOR	TYPE	PULL DOWN LAP	PULL UP LAP
RED	LATCH	9210B	9510B
BLUE	LATCH	9210C	9510C
BLACK	LATCH	9210D	9510D
PLATINUM 5-6 PT	LATCH	9210PL	9510PL
RED	CAM-LOCK	9210CB	9510CB
BLUE	CAM-LOCK	9210CC	9510CC
BLACK	CAM-LOCK	9210CD	9510CD
PLATINUM 5-6 PT	CAM-LOCK	9210CPL	9510CPL



COMPLETE 3" V-TYPE

SFI 16.1

SINGLE BOLT IN SHOULDER

COLOR	TYPE	PULL DOWN LAP	PULL UP LAP
RED	LATCH	9211B	9511B
BLUE	LATCH	9211C	9511C
BLACK	LATCH	9211D	9511D
PLATINUM	LATCH	9211PL	9511PL
RED	CAM-LOCK	9211CB	9511CB
BLUE	CAM-LOCK	9211CC	9511CC
BLACK	CAM-LOCK	9211CD	9511CD
PLATINUM	CAM-LOCK	9211CPL	9511CPL

www.rciracing.com

Driver Restraints

SFI 16.1 Professional Racing / Jeep / Off Road



All belts include high quality extra long webbing with all mounting hardware for roll bar, floor mount, bolt-in, or wrap-around mounting. All latch & link and aircraft style quick release cam-lock systems are SFI 16.1 approved. 5-point belts have a choice of pull down or pull up lap belts.



**BELT SNAP IN KIT
9250A**



**HARDWARE KIT
INCLUDED**



ONE PIECE SHOULDERS

COMPLETE 3" WRAP-AROUND ONLY SFI 16.1

COLOR

- RED
- BLUE
- BLACK
- PLATINUM
- RED
- BLUE
- BLACK
- PLATINUM

TYPE

- LATCH
- LATCH
- LATCH
- LATCH
- CAM-LOCK
- CAM-LOCK
- CAM-LOCK
- CAM-LOCK

PULL UP LAP

- 9411B
- 9411C
- 9411D
- 9411PL
- 9411CB
- 9411CC
- 9411CD
- 9411CPL



APPROVED



2" JUNIOR 5-POINT SFI 16.1

COLOR

- BLACK
- BLACK

TYPE

- LATCH
- CAM-LOCK

PULL UP LAP

- 9410D
- 9410CD



APPROVED



**HARDWARE KIT
INCLUDED**



**OFF ROAD COMPETITION BELTS
4-POINT 2 INCH NON-SFI**

COLOR

- RED
- BLUE
- BLACK

PART

- 9450B
- 9450C
- 9450D

**WINDOW NET INSTALL KIT
7651A**



WINDOW NETS SFI 27.1

WIDTH

- 18
- 23

HEIGHT

- 24
- 24

BLACK

- 7600D
- 7601D

903-939-1908

RACER'S CHOICE INC.

RCI[®]

PRODUCT CATALOG

REV OCT19

13960 State Hwy 64 West
Tyler, Texas 75704
903-939-1908
www.rciracing.com